



IRONWORKER MACHINE

MX340G



50 years
manufacturing industrial machinery



TECHNICAL FEATURES

All purpose ironworker machine MX340G NARGESA more than 40 tons. Its neck, displacement and wide working table turn it into a very versatile tooling: It pierces, folds, cuts, inlays, etc...

- > Hydraulic power: 40 Tn.
- > Working speed: 7,1 mm/sec.
- > Return speed: 9,3 mm/sec.
- > Punch displacement: 100 mm.
- > Neck: 180 mm.
- > Table Dimensions 245x265 mm.
- > Swinging front safety protection.
- > Activation with safety pedal.
- > Digital display.
- > Parts and strokes counter.
- > Alarm diagnose.
- > Motor power: 2,2 KW/ 3 HP.
- > Tension 3 phase: 230/400 V.
- > For other tensions or single-phased machines ask the manufacturer.

PUNCHING:

- > All kinds of punches can be supplied: round ones, square, oval, locks punches. Punching can be also made in a pipe.

OTHER APPLICATIONS:

- > There are a lot more applications for it. More than 40 standard tooling to make different jobs.

NO STANDARD APPLICATIONS:

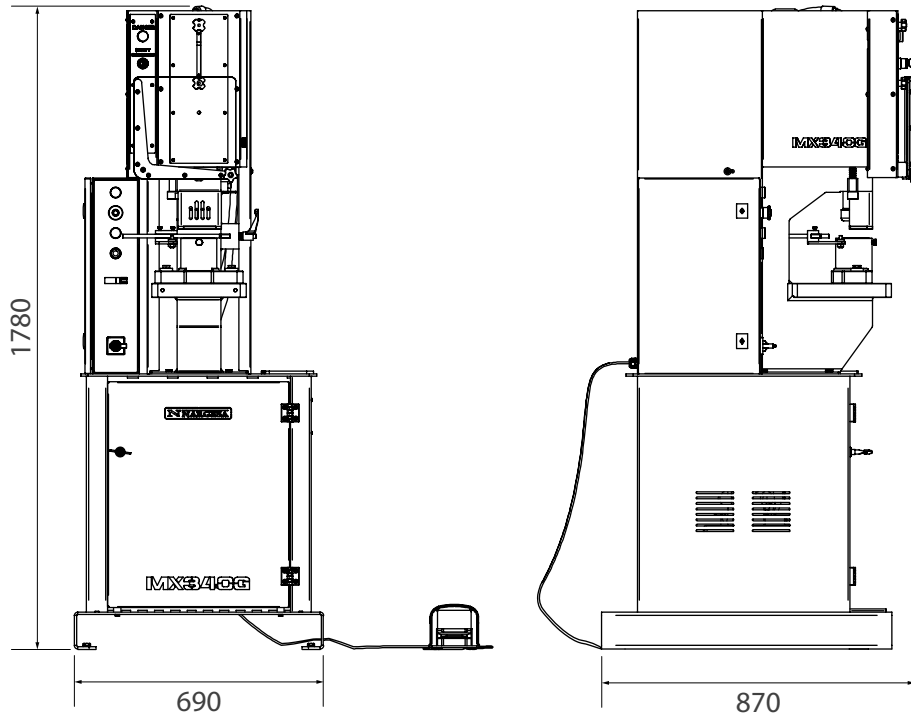
- > If the customer requires it we can manufacture under-request tooling to make all kinds of parts.

ADVANTAGES:

- > It is different from the rest of the other multifunctional universal punching machines because of its 180mm gooseneck, 100mm displacement and wide working table that allows to fit any kind of tooling.
- > Many of our customers make their own tooling.
- > Fast change of tooling, Max. 30 seconds.
- > Displacement adjustment allows an increase on productivity.
- > There is no maximum dimension for punching.

** All our products are manufactured in our facilities in Spain. The hydraulic and electrical components are all standard from the best leading European trademarks, with technical assistance all over the world: Rexroth, Bosch, Roquet, Schneider Electric, LG, Telemecanique, Pizzato etc...*

OUTSIDE DIMENSIONS



PACKAGING CHARACTERISTICS

- Tariff Item Code: 84624900
- Lower bench palletized to easily transport the machine to the workplace or store it in case of lacking space.
- The machine is shipped fully assembled.
- Pallet made of steel and 3 layer cardboard box suitable for seafreight.
- Optional: Fumigated wooden box NIMF15.

MX340G

Width	700 mm
Depth	800 mm
Height	1800 mm
Volume	1 m ³
Net Weight	615 Kg
Gross Weight	635 Kg

STANDARD ACCESSORIES SUPPLIED WITH THE MACHINE

Fitting nut for punches and base holder for dies



> All nargesa hydraulic punching machines are equipped with the punching tool that includes the fitting nut for punches and the base holder for dies. The rest of accessories are optional, which means each customer equips his machine as desired.



*Fitting nut for punches and
base holder for dies.*

OPTIONAL ACCESSORIES

Pround punches and dies, square punches, oval punches, rectangular,



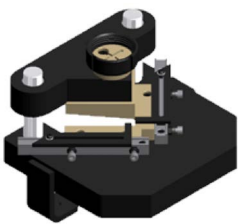
> In nargesa we have a wide catalogue of punches and dies of all kinds. If the size the customer needs is not in the list, we can make it.

In the PDF file you could see all the sizes we have.



Round punches and dies, square punches, oval punches, rectangular nargesa.

Stripper tooling 90° adjustable 100x100



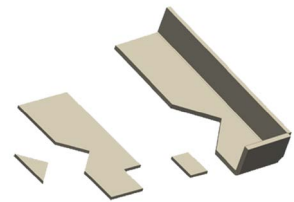
REF: 140-02-01-00005

- > Sheet stripping tooling, angle, etc.
- > Adjustable up to 100x100mm to 90° fix.

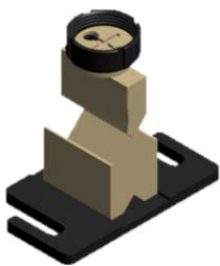
Max. Cutting capacity: 100x100x4mm.

Weight: 35 kg.

Optional tooling.



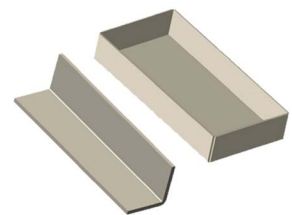
Folding tooling 170mm.



REF: 140-02-01-00004

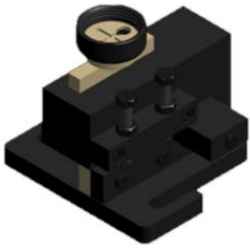
- > Tooling to fold steel sheet and flat bar up to 170mm. Punch 88°.
- > Die with 56mm and V 26mm V's.

Optional tooling.



Max. Folding length	Max. Thickness	Weight
170mm	8 to 12mm	12 Kg.

Flat bar cutting tooling 100x10mm.



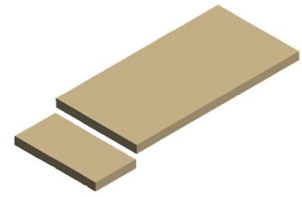
REF: 140-02-01-00002

> Tooling to cut metal sheet or flat bar from 0.8mm up to 10mm thickness.

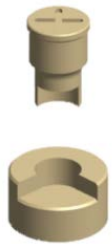
Max. Cutting capacity: 100x10mm.

Weight: 28 kg.

Optional tooling.



Tooling to round off corners

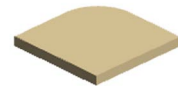


> Tooling to round off the corners in metals sheets of different radius.

In the PDF file you will be able to see all kinds we have.

Optional tooling.

Tooling to round off corners



Flattening extractor



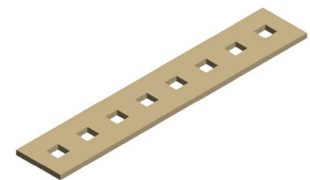
REF: 140-02-01-00039

> Extractor that acts like flattening flat bars while punching so they cannot be distorted during that process.

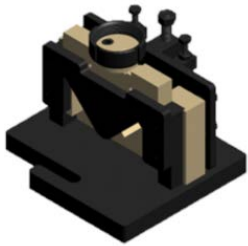
Max. Thickness for flat bar or solid bar: 15mm.

Weight: 15 kg.

Optional tooling.



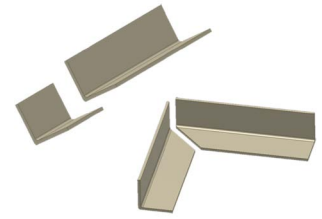
Angle cutting tooling



REF: 140-02-01-00001

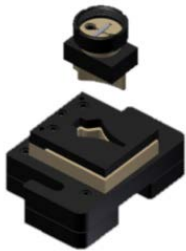
> Tooling to cut angle to 90° and 45°.

Optional tooling.



Max straight cutting capacity	Max. Mitre cutting capacity	Weight
60x60mm	50x50	32 Kg.

Arrow tooling for metal sheet



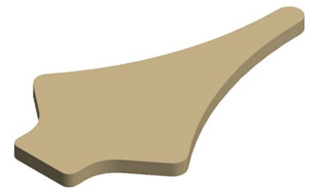
REF: 140-02-01-00006

> Tooling to punch steel sheet in arrow shape for fencing.

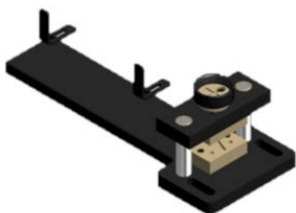
Max. Sheet thickness: 3mm.

Weight:21 kg.

Optional tooling.



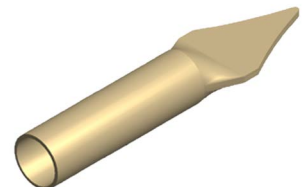
Arrows tooling for pipes



REF: 140-02-01-00007

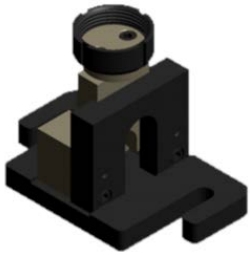
> Tooling to flatten and cut pipe in arrow shape. Suitable to different diameters.

Optional Tooling.



Max. Pipe diameter	Min. Pipe diameter	Weight
30x2mm	10x2mm	19 Kg.

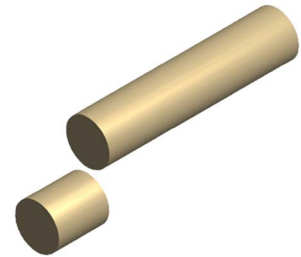
Round bar cutting tooling



REF: 140-02-01-00035

> Tooling to cut round solid bar from 3mm up to 35mm.

Optional Tooling.



Max. Cutting diameter	Min. Cutting diameter	Weight
35mm	3mm	15 Kg.

Punch and die for locks



REF: 140-02-01-00036

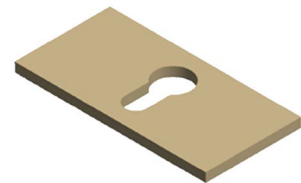
> Punch and die to make locks holes in metal sheet.

> Necessary complements: cab60 and tap40.

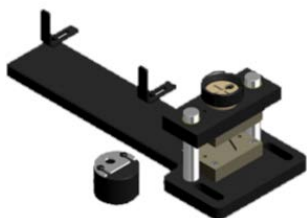
Max. Thickness: 6mm

Weight: 1 kg

Optional tooling.



Pipe ends fencing tooling



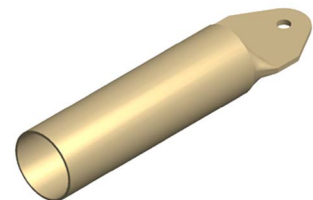
REF: 140-02-01-00040

> Tooling to flatten and punch the extreme of pipes for fencing.

> Admits different pipes diameters.

> The hole size is exchangeable.

Optional tooling.



Max. Pipe diameter	Min. Pipe diameter	Hole diameter	Weight
50mm	10mm	Changeable	23 Kg.

Pipe notching tooling



> Pipe notching tooling from Ø16 to Ø60mm. It consists of cutting the extreme of a pipe so it can be joined to another one perpendicularly.

In the PDF file you will be able to see all kinds and sizes we have.



Pipe notching tooling.

Flat bar round end tooling



> Tooling to make all kinds of flat bars with round ends, with or without hole, straight, round... Very used as handles, stands, etc...

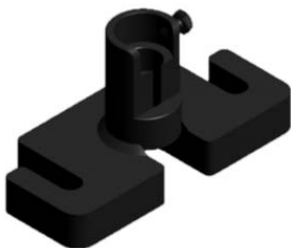
> Starting from a metal strip, a piece with the desired length comes out of it with every stroke.

In the PDF file you will see all kinds of shapes and sizes we have.



Flat bar round end tooling

Tooling for punching angle and U profile



REF: 140-02-01-00031

> Tooling to punch angles.

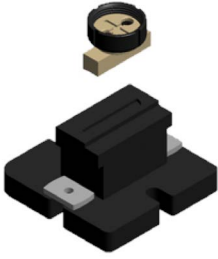
> Exchangeable punches and dies of different sizes.

Optional tooling.



Max. Hole diameter	Min. Hole diameter	Weight
28mm	2mm	9 Kg.

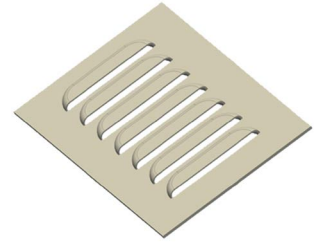
Ventilation grill tooling



REF: 140-02-01-00010

> Tooling to make ventilation grill in metal sheet. With adjustable punching operations since they're made one by one.

Optional tooling.



Punching sizes	Max. Thickness	Weight
100x20mm	2mm	20 Kg.