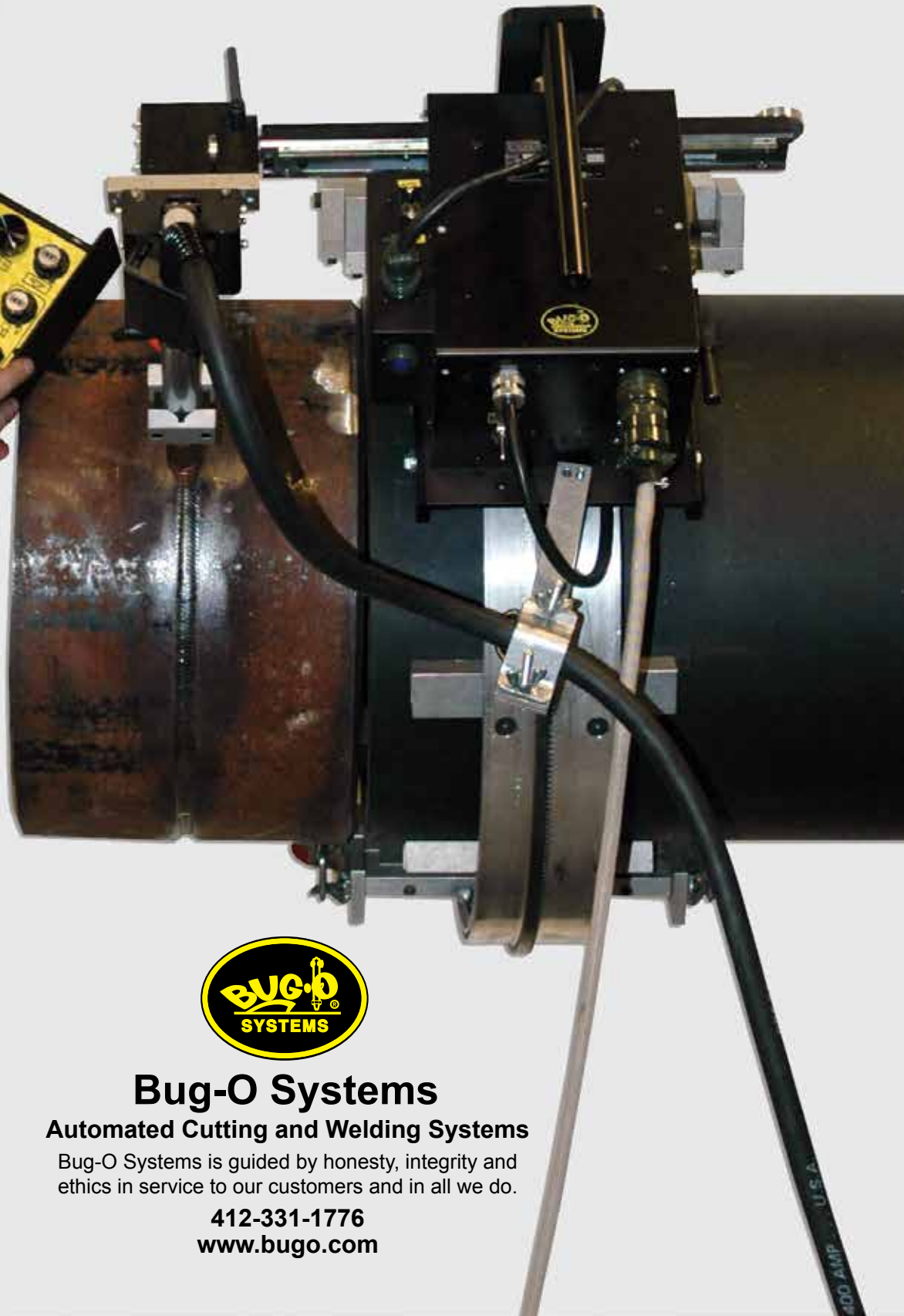


# UNIVERSAL BUG-O-MATIC

MADE IN  
  
U. S. A.



Flexible, Compact Drive and Oscillator  
Combination for Welding in All Positions



## Bug-O Systems

Automated Cutting and Welding Systems

Bug-O Systems is guided by honesty, integrity and ethics in service to our customers and in all we do.

412-331-1776  
[www.bugo.com](http://www.bugo.com)



# UNIVERSAL BUG-O-MATIC



The **Universal Bug-O-Matic** (BUG-5700, BUG-5702 and BUG-5704) is a compact unit which combines a powerful drive and precision oscillator all in one housing. The unit is lightweight and can easily be handled by one operator. The machine works in all positions and can be used for vertical and overhead welds. By simply changing the carriage, the unit can work on rigid rail, semi-flex rail, hi-flex rail or complete ring rails. The opening mechanism of the carriage allows the unit to be released or installed anywhere on the rail.

While welding, adjustments can be made to the travel speed, amplitude and oscillation speed as well as dwell left and dwell right. While the machine is welding, the torch can be guided by a separate steering knob. Closed loop feedback and dynamic braking allow the Bug-O-Matic to make precise starts, stops and travel at a constant speed.

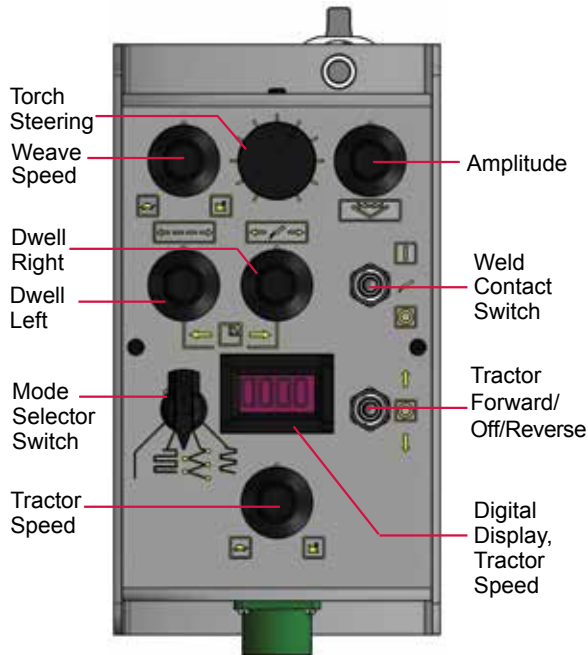
The **Universal Bug-O-Matic with Auto Height Control** (BUG-6550, BUG-6552 and BUG-6554) has the same functions as the Universal Bug-O-Matic, but in addition features amperage sensing automatic torch height adjustment which maintains constant torch to work distance. The Height Control features a motorized slide which provides a total of 2" (51 mm) of vertical travel.

## Pendant Control

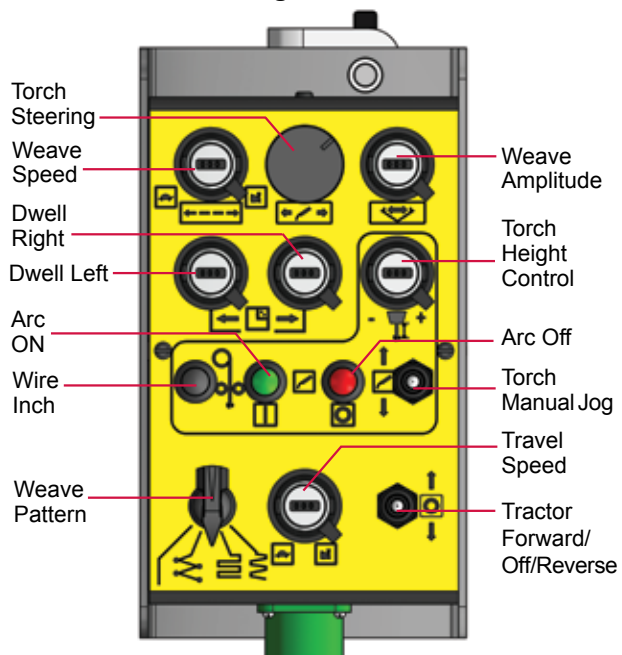
The Universal Bug-O-Matic features a remote control pendant which allows the operator to run the machine from up to 10 feet (3 m) away. The pendant can be clamped to the machine handle for easy storage or transport.

**NEW FEATURE:** All Universal Bug-O-Matics now include a Control Orientation Reversing switch. The pendant controls can be set to match the machine orientation. Example: 2 machines, running on one ring, welding a joint on a horizontal pipe.

**Standard Pendant**



**Automatic Height Control Pendant**



# Universal Bugomatic Options

## 1 RAILS



**FMD-1050**  
Hi-Flex Rail 57.72"  
(1.47 m) - Flex to  
minimum radius 30"  
(760 mm)



**ARR-1080**  
Aluminum  
Rigid Rail 8' (2.37 m)

**ARR-1085**  
Aluminum  
Rigid Rail 4' (1.18 m)

**AFR-3000**  
Semi-Flex Rail  
8' (2.37m) - Flex  
to minimum  
radius 15' (5 m)



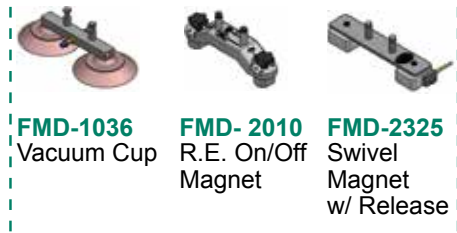
**BRR-1180**  
Bent Rigid  
Rail



**BRR-3250-XX**  
Rigid Ring Rail

Minimum  
Workpiece  
Diameter  
9" (230 mm)

## 2 ATTACHMENTS



**FMD-1036**  
Vacuum Cup

**FMD-2010**  
R.E. On/Off  
Magnet

**FMD-2325**  
Swivel  
Magnet  
w/ Release



**ARM-2380**  
Support  
Bar w/  
Screw Feet

**ARM-2480**  
Support Bar  
w/ Screw-  
Magnet Feet

**ARM-2580**  
Support Bar  
w/ Screw and  
Magsquare Feet



**ARV-1036**  
Vacuum  
Cups

**ARM-2010**  
R.E. On/Off  
Magnet

**ARM-2325**  
Swivel  
Magnet  
w/ Release

**ARM-2265**  
Fixed  
Magnet Plate  
w/ Release



**ARV-1036**  
Vacuum Cups

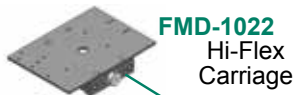
**AFR-2010**  
R.E. On/Off  
Magnet

**ARM-2425**  
Swivel  
Magnet  
w/ Release

**ARM-2465**  
Fixed  
Magnet Plate  
w/ Release

For more information on vacuum cups, magnets and rails, please see the corresponding rail page in the "Rails and Attachments" brochure in order to match the correct attachments with your rails.

## 3 CARRIAGES



**FMD-1022**  
Hi-Flex  
Carriage



**MPD-1065**  
12" (305 mm)  
Releasable  
Carriage

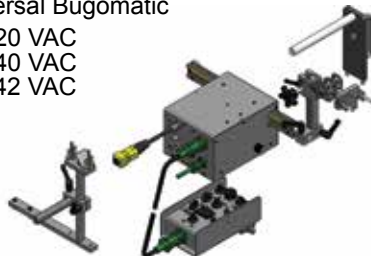


**BUG-5960**  
Tube Carriage

## 4 UNIVERSAL BUGOMATIC

Standard Universal Bugomatic

- BUG-5700** 120 VAC
- BUG-5702** 240 VAC
- BUG-5704** 42 VAC



Universal Bugomatic with  
Automatic Height Control

- BUG-6550** 120 VAC
- BUG-6552** 240 VAC
- BUG-6554** 42 VAC







# UNIVERSAL BUG-O-MATIC

The **Universal Bug-O-Matic** is operator friendly and produces precise, accurate welds. The remote pendant allows the operator to produce repeatable welds with pre-set parameters which increases production, improves quality and workers environment.

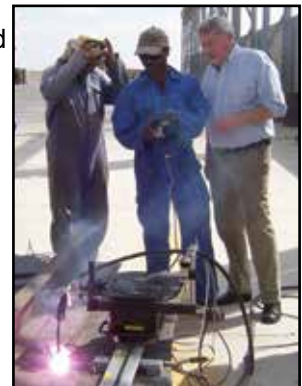
## Technical Data:

### Universal Bug-O-Matic

|                            |   |
|----------------------------|---|
| <b>Power Requirements:</b> | BUG-5700 120 VAC/50-60/1<br>BUG-5702 240 VAC/50-60/1<br>BUG-5704 42 VAC/50-60/1 |
| <b>Linear Speed:</b>       | 3-70 ipm (75-1750 mm/m)   |
| <b>Weave Speed:</b>        | 4-100 ipm (100-2500 mm/m)   |
| <b>Dwell Time:</b>         | 0-3 seconds, left and right   |
| <b>Weave Width:</b>        | 0.1-2" (2.5-50 mm)  |
| <b>Steering:</b>           | 2" (50 mm) left and right of center<br>4" (100 mm) total                        |
| <b>Load Capacity:</b>      | 30 lbs. (14 kg)   |
| <b>Net Weight:</b>         | 28 lbs. (13 kg)   |
| <b>Shipping Weight:</b>    | 33 lbs. (15 kg)   |

### Universal Bug-O-Matic With Auto Height Control

|                            |   |
|----------------------------|---|
| <b>Power Requirements:</b> | BUG-6550 120 VAC/50-60/1<br>BUG-6552 240 VAC/50-60/1<br>BUG-6554 42 VAC/50-60/1 |
| <b>Linear Speed:</b>       | 3-70 ipm (75-1750 mm/m)   |
| <b>Weave Speed:</b>        | 4-100 ipm (100-2500 mm/m)   |
| <b>Dwell Time:</b>         | 0-3 seconds, left and right   |
| <b>Weave Width:</b>        | 0.1-2" (2.5-50 mm)  |
| <b>Steering:</b>           | 2" (50 mm) left and right of center<br>4" (100 mm) total                        |
| <b>Load Capacity:</b>      | 30 lbs. (14 kg)   |
| <b>Net Weight:</b>         | 36 lbs. (16 kg)   |
| <b>Shipping Weight:</b>    | 41 lbs. (19 kg)   |



## Dimensions:

